

Customer :

customer

Customer part :

customer part

Comment :

Comment

S1=3.54

S2=4.21

Tmax=459

Tp S2=498.0

PI=0.46

HI=75

Sample =1683.60

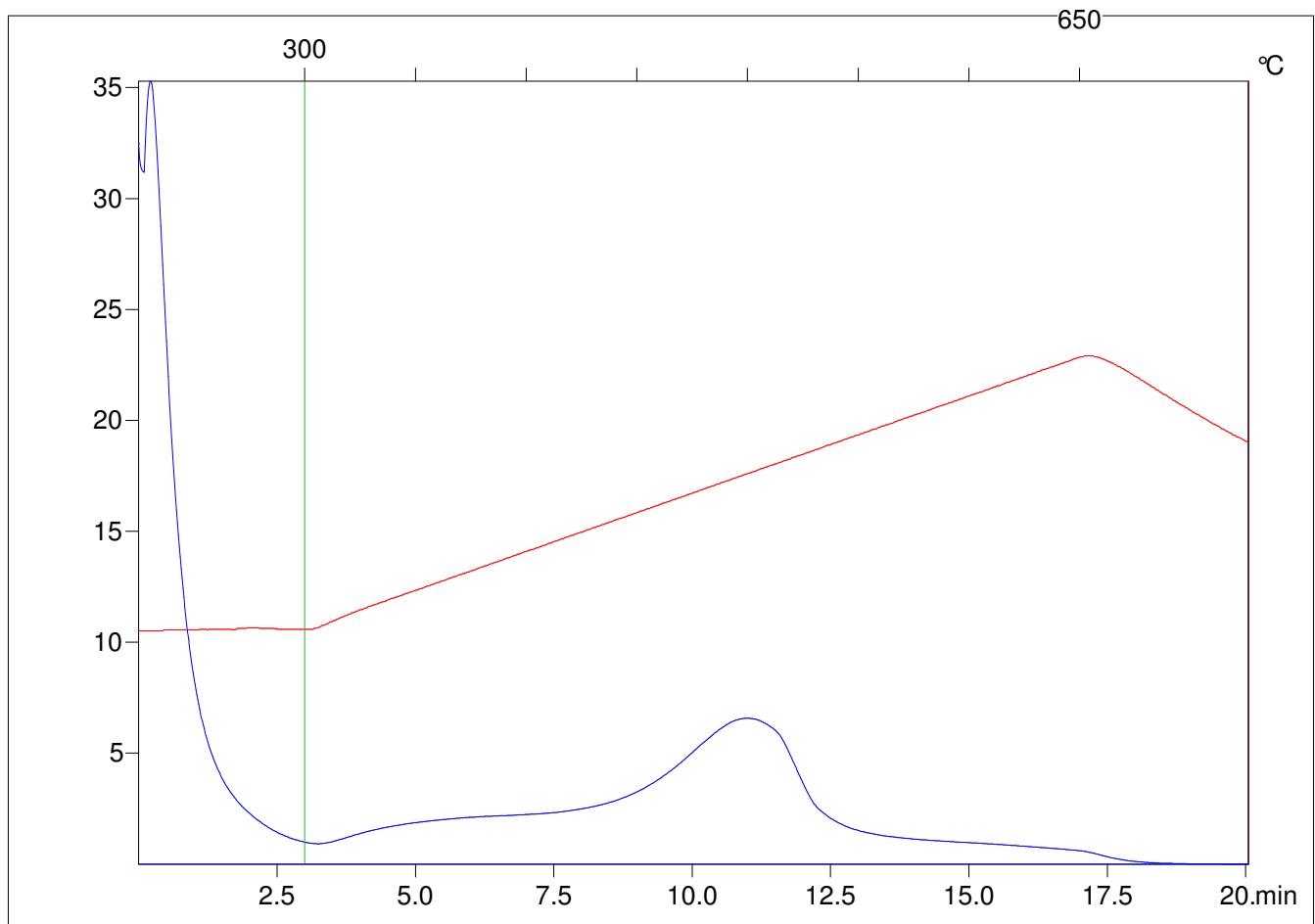
Method =Bulk Rock

Cycle=Basic

KFID(10\*9)=1444

Qty =70.6

TOC=5.61



C:\VINC\PK1\_1792\PK042.R00 : FID pyrolysis graphic

State

Pyro Status

Oxi Status